

ANDREA LUCHESI

*Motta di Livenza (TV) 1741 – Bonn 1801*

Sinfonia in Re Magg.

*per Flauto, 2 Oboi, Fagotto, 2 Corni, 2 Clarini, Timpani,  
Violino I e II, Viola, V.cello, C.basso.*

VIOLONCELLO

*Revisione e Trascrizione di AGOSTINO GRANZOTTO*

# SINFONIA in RE Magg.

L'esecuzione in pubblico è consentita solo a condizione che sul programma risulti, accanto a quello dell'autore, il nome del revisore.

per Flauto, 2 Oboi, Fagotto, 2 Corni, 2 Clarini,  
Violino I e II, Viola, V.cello, C.basso, Timpani

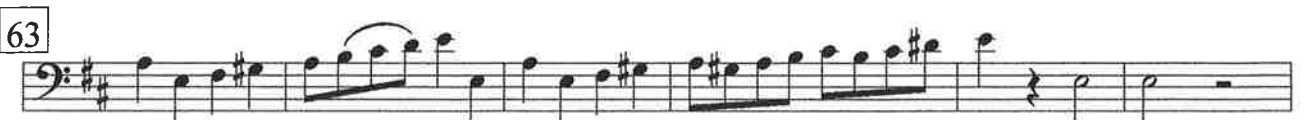
V.Cello

Revisione e trascrizione di *Agostino Granzotto*

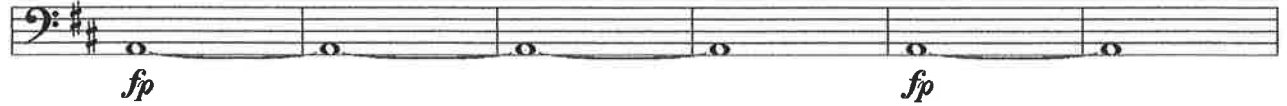
*Adagio* 8

*Allegro molto*

Andrea Luchesi (1741-1801)



69



75



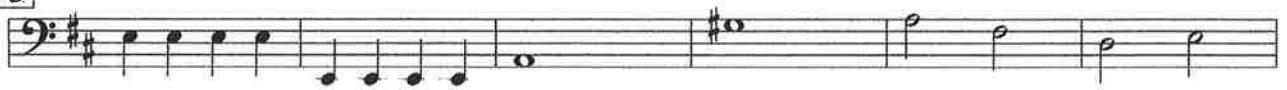
82



87



93



99



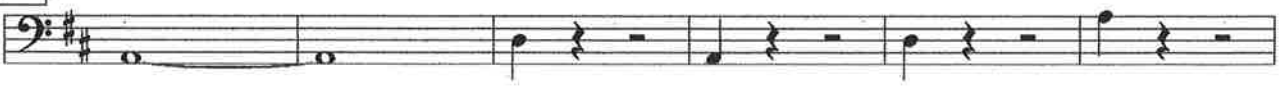
105



111



117



123



129



134

*p*

139

*f*

145

151

157

*p*

163

*f*

169

*p*

175

181

187

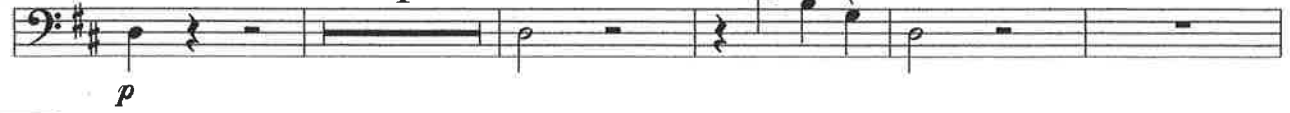
*f*

193

199



205



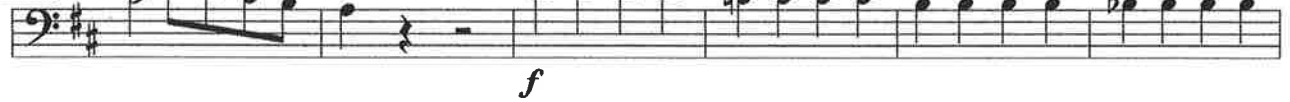
211



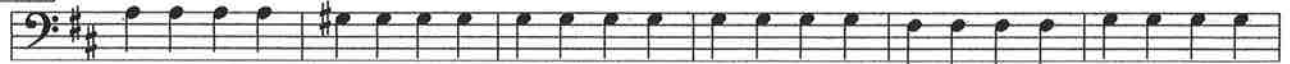
217



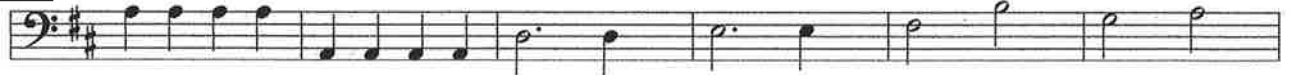
223



229



235



241



246



252



*Un poco Allegretto*

1

2

*p*

9

*rinf.*

13

2

19

*p*

27

*pizz.*

1

32

1

*arco p*

39

*rinf.*

45

*ff*

50

*pizz.*

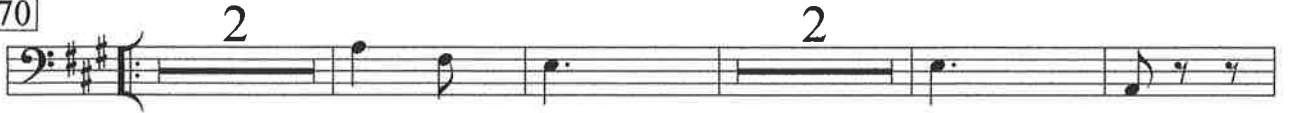
57

*arco*

64



70



78



86



92



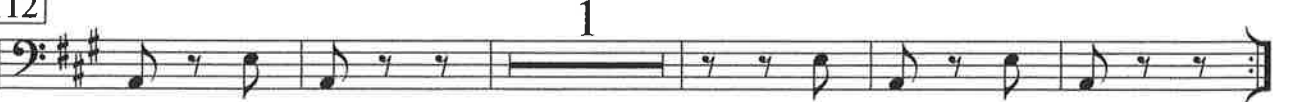
97



106



112



**Menuet**

*f*

7

*p* *mf* *f*

15

*ff*

20

*pp*

25

*f* FINE

31 **Trio**

7

40

12

**D. C. Menuet**



*Allegro molto*

51

*f*

57

*f*

61

1 1

67

*f* *p*

73

*ff* 6

77

6 6 6 6

82

6 *p*

86

6

91

*p* *f* *p* *f*

95

Musical notation for measure 95, bass clef, key signature of one flat. The measure contains two sixteenth-note runs, each starting with a sixteenth rest and a sixteenth note, followed by a sixteenth-note triplet. The first run is marked with a '6' below it. The second run is also marked with a '6' below it.

99

Musical notation for measure 99, bass clef, key signature of one flat. The measure contains a sixteenth-note triplet followed by a sixteenth-note run, then a sixteenth-note triplet, and finally a sixteenth-note run. Each of the two runs is marked with a '6' below it.

104

Musical notation for measure 104, bass clef, key signature of one flat. The measure contains a series of sixteenth notes, ending with a sixteenth-note triplet. The key signature changes to two sharps at the end of the measure.

108

Musical notation for measure 108, bass clef, key signature of two sharps. The measure contains a sixteenth-note triplet, followed by a sixteenth-note run, and then a sixteenth-note triplet. The first triplet is marked with a '1' above it, and the second triplet is marked with a '2' above it. The dynamic marking *ff* is placed below the first triplet.

114

Musical notation for measure 114, bass clef, key signature of two sharps. The measure contains a sixteenth-note triplet, followed by a sixteenth-note run, and then a sixteenth-note triplet. The first triplet is marked with a *f* below it, and the second triplet is marked with a *f* below it. A '6' is written above the second triplet.

125

Musical notation for measure 125, bass clef, key signature of two sharps. The measure contains a sixteenth-note triplet, followed by a sixteenth-note run, and then a sixteenth-note triplet. The dynamic marking *f* is placed below the second triplet.

130

Musical notation for measure 130, bass clef, key signature of two sharps. The measure contains a series of sixteenth notes, ending with a sixteenth-note triplet. A horizontal line is drawn below the first two groups of sixteenth notes.

134

Musical notation for measure 134, bass clef, key signature of two sharps. The measure contains a series of sixteenth notes, ending with a sixteenth-note triplet. A horizontal line is drawn below the first two groups of sixteenth notes.

