

ANDREA LUCHESI (1741-1801)

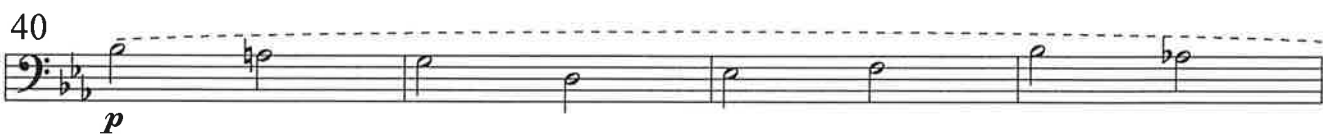
SINFONIA N.6 in Mib Magg.

per 2 Oboi, 2 Corni, Fagotto, Violino 1° e 2°,
Viola, V.cello. (C,basso).

C.Basso

Trascrizione e Revisione a cura di Agostino Granzotto

Allegro



48

Measures 48-52: Bass clef, key signature of two flats. Measure 48 starts with a forte (*f*) dynamic. The melody consists of eighth notes. Measure 52 ends with a piano (*p*) dynamic.

53

Measures 53-59: Bass clef, key signature of two flats. The melody consists of quarter notes with rests.

60

Measures 60-65: Bass clef, key signature of two flats. Measure 60 starts with a piano (*p*) dynamic. Measure 63 has a forte (*f*) dynamic. Measure 65 ends with a sharp sign on the note.

66

Measures 66-70: Bass clef, key signature of two flats. Measure 66 starts with a piano (*p*) dynamic. Measure 70 ends with a sharp sign on the note.

71

Measures 71-75: Bass clef, key signature of two flats. Measure 71 starts with a forte (*f*) dynamic. The melody consists of eighth notes.

76

Measures 76-81: Bass clef, key signature of two flats. Measure 76 starts with a piano (*p*) dynamic. Measure 81 has a forte (*f*) dynamic.

82

Measures 82-86: Bass clef, key signature of two flats. Measure 82 starts with a forte (*f*) dynamic. Measure 86 ends with a double bar line.

V. S.

Andante

Musical score for C. basso, *Andante* tempo. The score consists of ten staves of music in bass clef with a key signature of two flats and a 2/4 time signature. The music features various dynamics including piano (*p*), forte (*f*), piano fortissimo (*sf*), and crescendo (*cresc.*).

Staff 1: *p* *f* *p* *cresc.*
 Staff 2: *f* *p*
 Staff 3: *f* *p* *f* *p*
 Staff 4: *f* *p* *f* *p* *cresc.* *f*
 Staff 5: *p*
 Staff 6: *f* *f* *p* *cresc.*
 Staff 7: *f* *p* *f* *p* *f* *p* *f* *p*
 Staff 8: *cresc.* *f* *p*
 Staff 9: *sf* *f*

MUS 3478 N.1-2 Dresda -Sinfonia in Mib Magg. 2° tempo- Raccolta Agostino Granzotto n.26.

© Copyright Agostino Granzotto 1992.

Tutti i diritti riservati.

Presto