

ANDREA LUCHESI

Motta di Livenza (TV) 1741 – Bonn 1801

Sinfonia in Re Magg.

*per Flauto, 2 Oboi, Fagotto, 2 Corni, 2 Clarini, Timpani,
Violino I e II, Viola, V.cello, C.basso.*

OBOE II

Revisione e Trascrizione di AGOSTINO GRANZOTTO

SINFONIA in RE Magg.

L'esecuzione in pubblico è consentita solo a condizione che sul programma risulti, accanto a quello dell'autore, il nome del revisore.

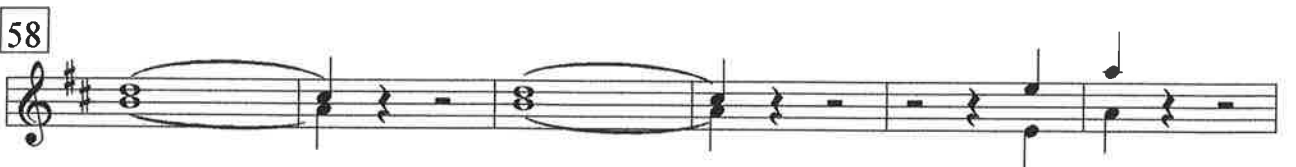
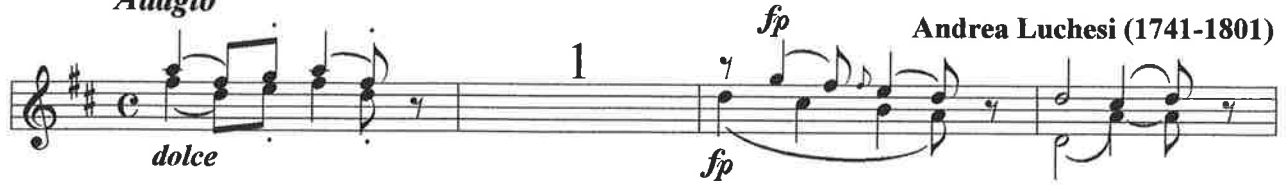
per Flauto, 2 Oboi, Fagotto, 2 Corni, 2 Clarini,
Violino I e II, Viola, V.cello, C.basso, Timpani

Oboe I e II

Revisione e trascrizione a cura di Agostino Granzotto

Adagio

Andrea Luchesi (1741-1801)



MUS D 637 MODENA - Sinfonia in Re 1° t.

© Copyright Agostino Granzotto 1997.

Tutti i diritti riservati.

171 12 *p*

190 1 *f*

197

204 1 *pp*

211 14 *f*

231

238 3 *f* *cresc.*

247

253

Un poco Allegretto

6 9

19 6 2 1

32 1 p p

39 3 rinf.

47 tr tr ff p

53 10

70 15

86 p 5

97 8 5

111 1 p p

Menuet

f a 2 a 2

7 4 *f*

15 2 4 *f*

25 *ff* FINE

31 *I Solo*
p dolce


37 3

43 *tr*

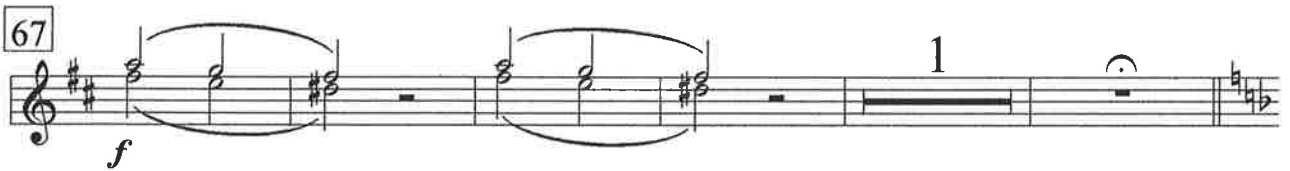
49 3

D. C. Menuet

51 

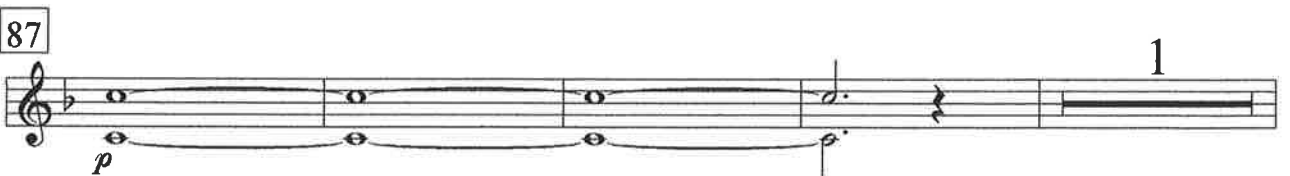
55 


58 

67 

73 

78 

87 

92 

97



Musical notation for measure 97, featuring a treble clef, a key signature of one sharp (F#), and a 2/4 time signature. The measure contains a series of chords and a melodic line with a fermata over the final notes.

103



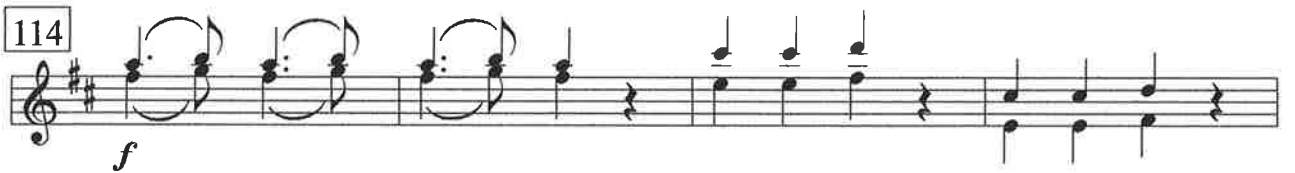
Musical notation for measure 103, featuring a treble clef, a key signature of one sharp (F#), and a 2/4 time signature. The measure contains a series of chords and a melodic line with a fermata over the final notes.

108



Musical notation for measure 108, featuring a treble clef, a key signature of one sharp (F#), and a 2/4 time signature. The measure contains a series of chords and a melodic line with a fermata over the final notes. The dynamic marking *f* is present.

114



Musical notation for measure 114, featuring a treble clef, a key signature of one sharp (F#), and a 2/4 time signature. The measure contains a series of chords and a melodic line with a fermata over the final notes. The dynamic marking *f* is present.

118



Musical notation for measure 118, featuring a treble clef, a key signature of one sharp (F#), and a 2/4 time signature. The measure contains a series of chords and a melodic line with a fermata over the final notes. The dynamic marking *p* is present.

122



Musical notation for measure 122, featuring a treble clef, a key signature of one sharp (F#), and a 2/4 time signature. The measure contains a series of chords and a melodic line with a fermata over the final notes. The dynamic marking *f* is present.

128 *Coda*



Musical notation for measure 128, featuring a treble clef, a key signature of one sharp (F#), and a 2/4 time signature. The measure contains a series of chords and a melodic line with a fermata over the final notes. The dynamic marking *f* is present.

134



Musical notation for measure 134, featuring a treble clef, a key signature of one sharp (F#), and a 2/4 time signature. The measure contains a series of chords and a melodic line with a fermata over the final notes.

