

ANDREA LUCHESI

Motta di Livenza (TV) 1741 – Bonn 1801

Sinfonia in Re Magg.

*per Flauto. 2 Oboi. Fagotto. 2 Corni. 2 Clarini. Timpani.
Violino I e II, Viola, V.cello, C.basso.*

VIOLA II

Revisione e Trascrizione di AGOSTINO GRANZOTTO

SINFONIA in RE Magg.

L'esecuzione in pubblico è consentita solo a condizione che sul programma risulti, accanto a quello dell'autore, il nome del revisore.

per Flauto, 2 Oboi, Fagotto, 2 Corni, 2 Clarini,
Violino I e II, Viola, V.cello, C.basso, Timpani

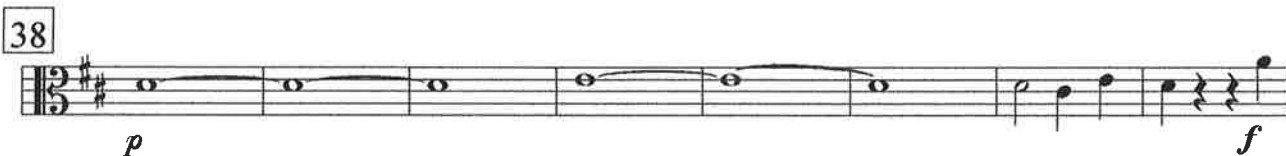
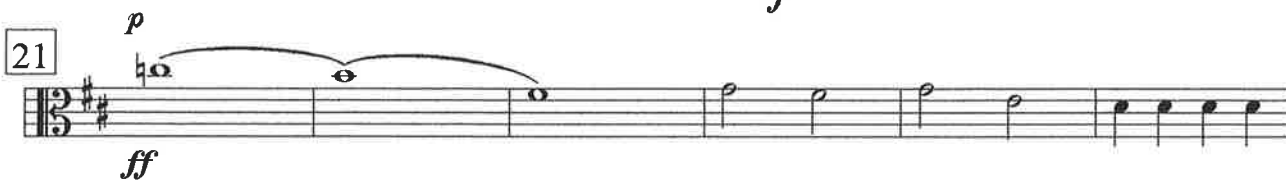
Viola II

Revisione e trascrizione di **Agostino Granzotto**.

Adagio 8

Allegro molto

Andrea Luchesi (1741-1801)

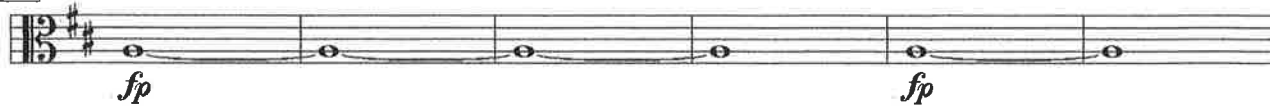


MUS D 637 MODENA Sinfonia in Re.

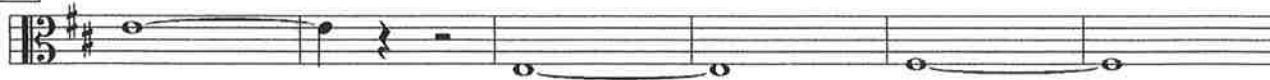
© Copyright Agostino Granzotto 1997.

Tutti i diritti riservati.

69



75



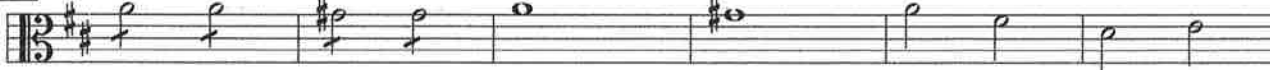
81



87



93



99



105



111



117



123



131



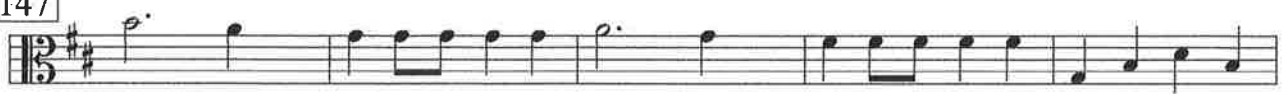
136



142



147



152



157



163



168



175



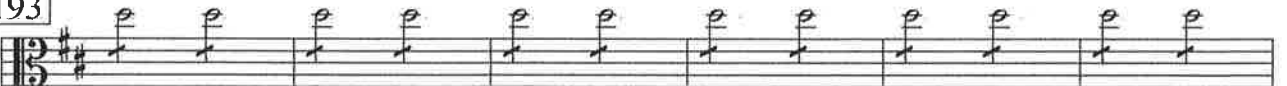
181



187



193



199 

205 
p

211 

217 

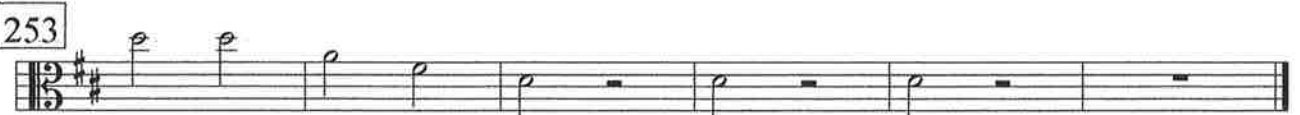
223 
f

229 

235 

241 
f *cresc.*

247 

253 

Un poco Allegretto

1

2

p

9

rinf.

2

15

p

21

27

pizz.

arco p

33

1

39

f

rinf.

44

f

49

pizz. p

56

arco

63

Musical notation for measure 63, bass clef, key signature of two sharps (F# and C#), 3/4 time signature. The measure contains a half note G2, a half note A2, a quarter note B2, a quarter note C3, a quarter note D3, a quarter note E3, a quarter note F#3, and a quarter note G#3. A dynamic marking of *f* is placed below the staff.

70

Musical notation for measure 70, bass clef, key signature of two sharps (F# and C#), 3/4 time signature. The measure contains a half note G2, a half note A2, a quarter note B2, a quarter note C3, a quarter note D3, a quarter note E3, a quarter note F#3, and a quarter note G#3. A dynamic marking of *p* is placed below the staff. A fingering of 2 is shown above the first two notes.

78

Musical notation for measure 78, bass clef, key signature of two sharps (F# and C#), 3/4 time signature. The measure contains a half note G2, a half note A2, a quarter note B2, a quarter note C3, a quarter note D3, a quarter note E3, a quarter note F#3, and a quarter note G#3. A fingering of 2 is shown above the first two notes.

86

Musical notation for measure 86, bass clef, key signature of two sharps (F# and C#), 3/4 time signature. The measure contains a half note G2, a half note A2, a quarter note B2, a quarter note C3, a quarter note D3, a quarter note E3, a quarter note F#3, and a quarter note G#3. A trill marking *tr* is placed above the first two notes.

92

Musical notation for measure 92, bass clef, key signature of two sharps (F# and C#), 3/4 time signature. The measure contains a half note G2, a half note A2, a quarter note B2, a quarter note C3, a quarter note D3, a quarter note E3, a quarter note F#3, and a quarter note G#3.

97

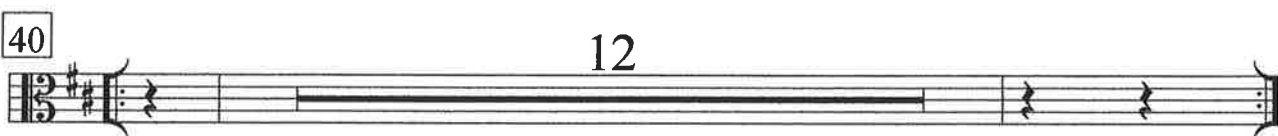
Musical notation for measure 97, bass clef, key signature of two sharps (F# and C#), 3/4 time signature. The measure contains a half note G2, a half note A2, a quarter note B2, a quarter note C3, a quarter note D3, a quarter note E3, a quarter note F#3, and a quarter note G#3. A dynamic marking of *p* is placed below the staff.

106

Musical notation for measure 106, bass clef, key signature of two sharps (F# and C#), 3/4 time signature. The measure contains a half note G2, a half note A2, a quarter note B2, a quarter note C3, a quarter note D3, a quarter note E3, a quarter note F#3, and a quarter note G#3. A dynamic marking of *pizz.* is placed below the staff. A fingering of 1 is shown above the last note.

111

Musical notation for measure 111, bass clef, key signature of two sharps (F# and C#), 3/4 time signature. The measure contains a half note G2, a half note A2, a quarter note B2, a quarter note C3, a quarter note D3, a quarter note E3, a quarter note F#3, and a quarter note G#3. A dynamic marking of *arco P* is placed below the staff. A fingering of 1 is shown above the last note.

Menuet**D. C. Menuet**

Allegro molto

45 *f* *f* 2

51 *f*

56 *f* 6 6

60 1 1

66 *f* *p*

73 *ff* 6

77 6 6 6 6

82 *p* 4

91 1 1 *f* *f* *p*

96



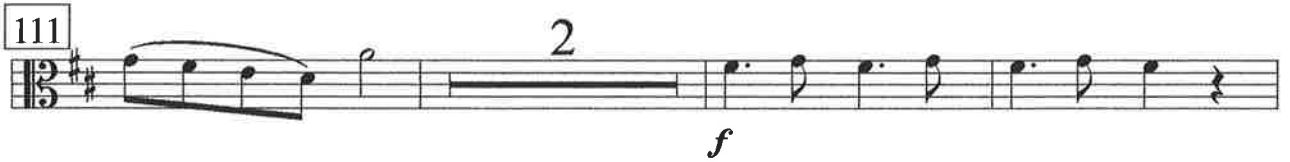
101



106



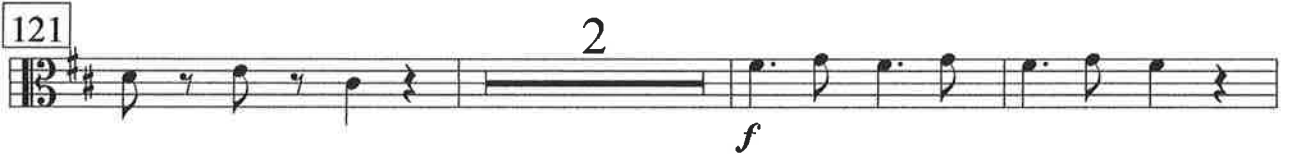
111



116



121



126



131



135



